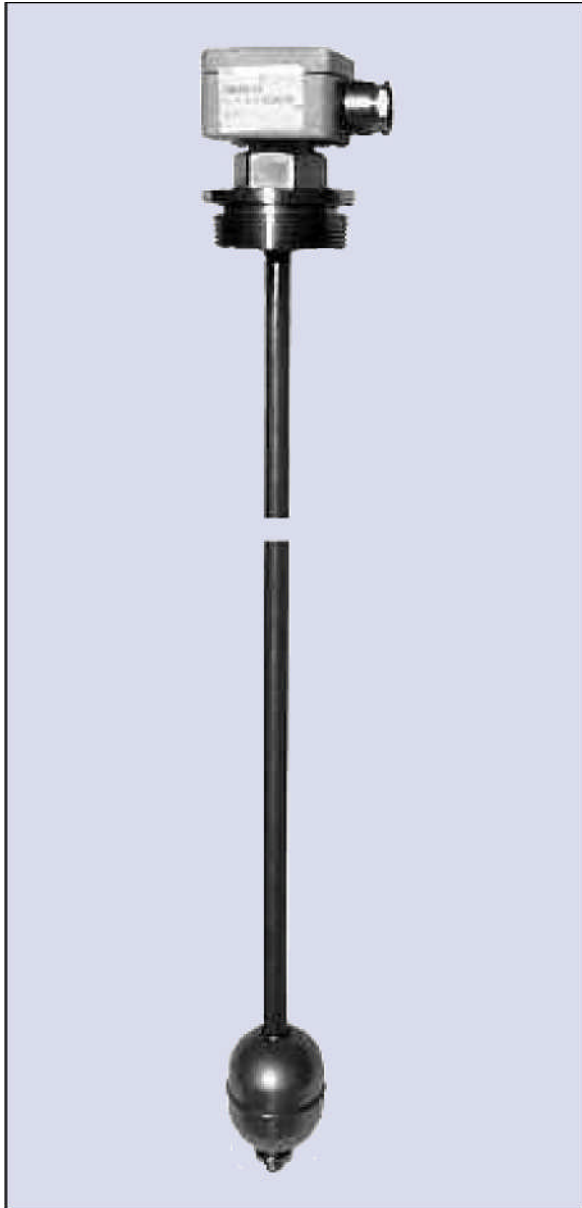


# Type USE 3000

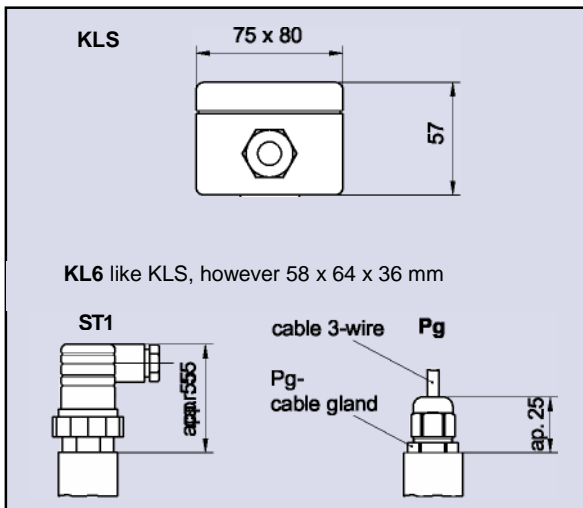
**USE 3000 - Level Sensor**  
up to 3000 mm Length



**Technical Data**

Max. Length L <sub>0</sub>	: 3000 mm
Materials	: Stainless steel (1.4571, 1.4404), brass, other material on request
Mounting Element	: Stainless steel (1.4571, 1.4404), Tank screw or flange
Stem	: Stainless steel (1.4571), Brass, $\varnothing = 13 \times 1$ mm
Float	: - Stainless steel (1.4571) VA44, $\varnothing = 44$ mm, oval min. media density = $0.9 \text{ g/cm}^3$ max. pressure = 15 bar - VA52, $\varnothing = 52$ mm, oval min. media density = $0,74 \text{ g/cm}^3$ max. pressure = 25 bar - VA80, $\varnothing = 82$ mm, ball min. media density = $0.5 \text{ g/cm}^3$ max. pressure = 16 bar
Electrical Connection	: ST1 - Cube plug DIN43650 (3-pin + earth) PG - Cable gland PG 13,5 incl. 1,5 m cable KL6 - Aluminum terminal box (58 x 64 x 36 mm, 3 terminals) KLS - Aluminum terminal box incl. transducer MU3L (75 x 80 x 57 mm)
Protection Class	: ST1, KL6, KLS = IP65, PG = IP67
Temperature Ranges	: $-10 \text{ }^\circ\text{C} \dots +90 \text{ }^\circ\text{C}$ $-50 \text{ }^\circ\text{C} \dots +150 \text{ }^\circ\text{C}$ HT - high temperature only with KL6 or silicone cable possible
Total Resistance	: $>14 \text{ k}\Omega$
Power Supply	: 8 ... 35 V DC
Type of Screen	: R12 = screen 12,7 mm (1/2") accuracy $\pm 6,4$ mm appr. 0,2% at 3000 mm measuring length
Wiring	: 3-wire, length up to 5000 mm depending on cable diameter
Options	: DR- slosh tube, Pt100-element, thermo reed, HT-isolation, interfacial level indication

**Electrical Connections**



05 / 03 TLI-ENG 03/1

Barksdale Tank Level Indicating Systems

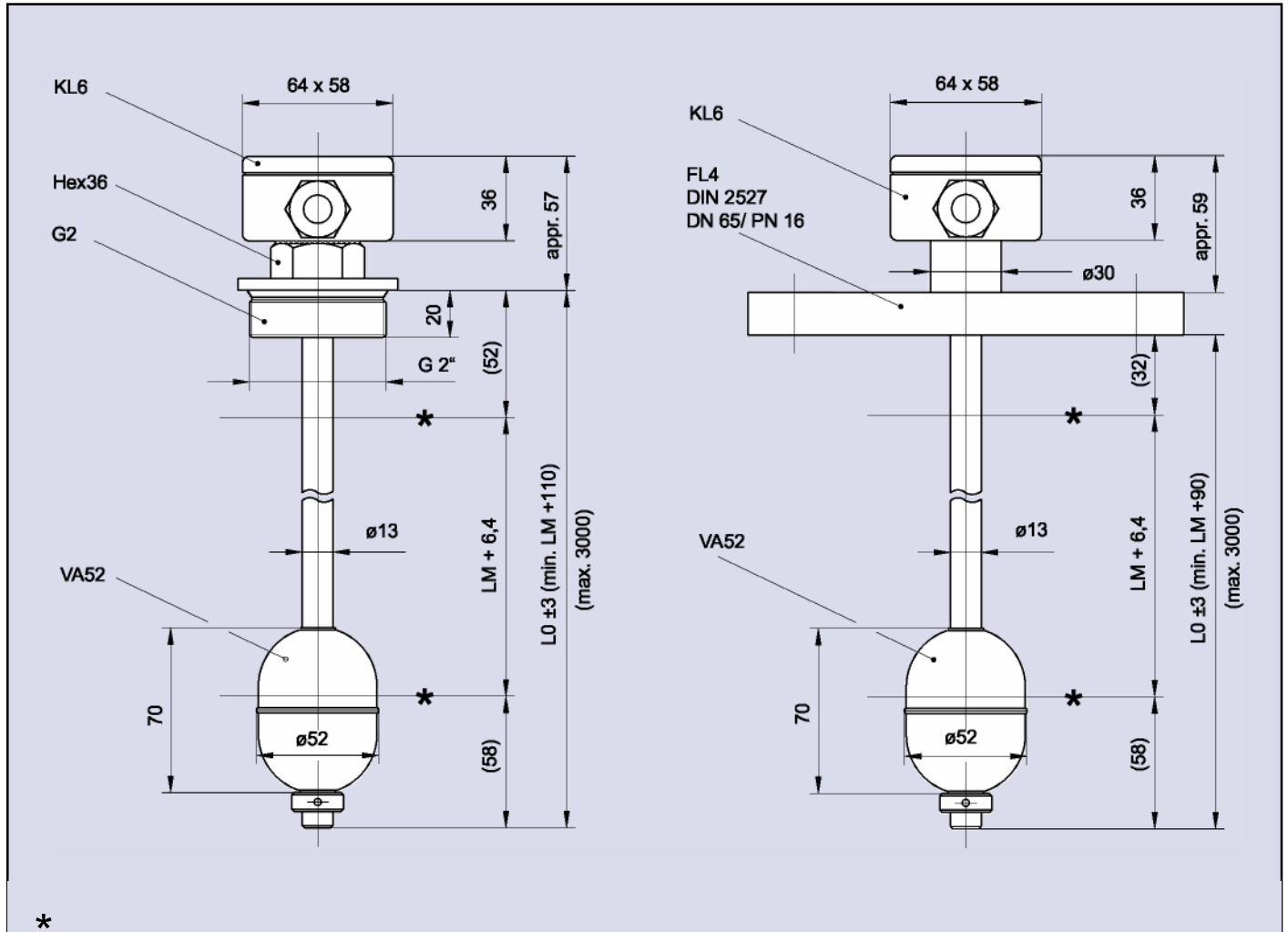
Specifications are subject to changes without notice.

**Type USE 3000**

**Dimensions (in mm)**

05 / 03 TLI-ENG 03/1

Barksdale Tank Level Indicating Systems



**Order number example**

Type	Series	Material	Mounting Element	Electrical Connection	Float Type	Screen	Meas. Length LM	Options
USE 3000	ñ	VA	/ G2	ñ KL6	ñ VA52	ñ R12	ñ 2000	-
<b>Your order number</b>	USE 3000	ñ	/	ñ	ñ	ñ	ñ	

Specifications are subject to changes without notice.

Material	Mounting Element	Electrical Connection	Float Type	Screen	Meas. Length LM (in mm)	Options
(VA) Stainless steel 1.4571/ 1.4408	(G2) G 2 Tank screw	(ST1) Plug DIN 43650, 3-pin + PE (PG)	(VA52) Stainless steel float ø52 mm	(R12) Fine screen	xxxx (e. g.: 2 m = 2000)	(PT100) Integrated tempera- ture measurement via Pt100-element
(MS) Brass	(FL4) DIN-flange, DN65/PN16, only VA	Cable gland PG13,5, incl. 1,5 m cable  (KL6) Aluminum terminal box, 3 terminals (KLS) Aluminum terminal box incl. transducer MU3L	(VA44) Stainless steel float ø44 mm  (VA80) Stainless steel float ø82 mm			(TR) Integrated tempera- ture measurement via thermo reed  (DR) Slosh tube (HT) HT-isolation (TM) Interfacial level indication